

“ Growing Elegantly, Gracefully And Full Of Humility ”

The logo for G7 Aerospace, featuring the letters 'G7' in a stylized blue font with a red triangle pointing to the right, followed by the words 'AERO' and 'SPACE' in a bold, blue, sans-serif font with a white outline.

**G7 AERO  
SPACE**

A photograph of an aircraft maintenance hangar. In the foreground, a man in a dark blue polo shirt is working on a laptop on a piece of equipment. In the background, other staff are visible on a yellow staircase and near an aircraft. The scene is brightly lit with industrial lighting.

# AIRCRAFT GROUND SUPPORT EQUIPMENT

*Design, Fabrication and MRO Services*

# About Us

G7 Aerospace have established capabilities in Design, Fabrication, Maintenance and Repair of Aircraft Ground Support Equipment since 2020 from our Melaka facility. We use 3D design software, such as Solidworks and AutoCAD Inventor and 3D Printers, to develop design from concept to reality.

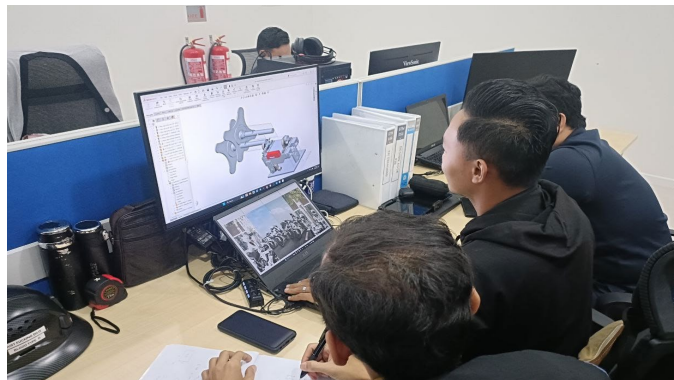
This has improved our approached in the design phase where we are able to make faster and better judgement before continuing to the fabrication phase. With this capability, we are able to develop many products such as maintenance platform, wing adapter, and various component stands and out-sourcing the detail metal fabrication to the local companies.

For obsolete equipment, we are able to source spares or propose modification or alternative components to make the equipment serviceable. We work closely with the customer to understand their requirements and advise them the best solution.



# About Us

Our **AGSE Team** consists of a skilled group of ex-military personnel with more than 20-years in aviation and defence industry and capable to fabricate, conduct troubleshooting on the defect equipment, maintaining, servicing and overhauling of the equipment's, either in our facility or at customer site.



# About Us

We always conduct thorough inspections and quality checks throughout the fabrication and maintenance process to ensure that the work is performed to the highest standard verifying all fabrications, repairs and replacements meet customer requirements and adhere to industry best practices. We ensure that all maintenance activities adhere to strict requirement standards and safety protocols by following established procedures, document maintenance actions, and maintain accurate records to demonstrate compliance with related requirements.



# CERTIFICATIONS & APPROVALS

ISO | CAAM | SAMM | AMO | AEO



5-STAR RATING



APPROVED MAINTENANCE ORGANISATION (AMO)



AUTHORISED ENGINEERING ORGANISATION (AEO)



AS/EN 9100:2016 REV D | ISO 9001:2015



PART 145



SAMM 993

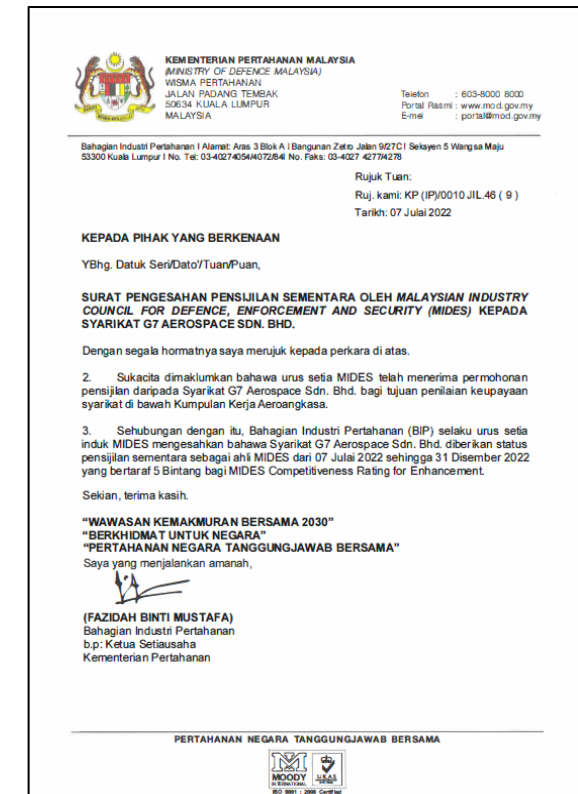
# G7 AEROSPACE CERTIFICATIONS

## GOVERNMENT RATINGS

MINISTRY OF DEFENCE

2022 5 STARS RATING

MINISTRY OF ENTREPRENEUR  
DEVELOPMENT AND  
COOPERATIVE



# G7 AEROSPACE CERTIFICATIONS

## RECOGNITION



NON-DESTRUCTIVE TESTING SERVICES

# SERVICES PROVIDER

## CALIBRATION - TPME

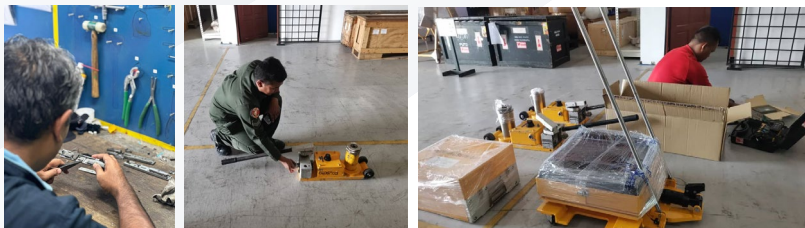
## LOAD TESTING & SPECIALIST TESTING SERVICES

## OVERHAUL & REFURBISHMENT

## HYDRAULICS & PNEUMATICS

We oversee the calibration schedule for your Tool Precision Measuring Equipment (TPME), ensuring that your tools remain in optimal condition and accurately calibrated at all times.

- ✓ Dial gauges and digital gauges,
- ✓ Weighing scales,
- ✓ Electronic measuring equipment; insulation tester
- ✓ Callipers
- ✓ Torque wrench



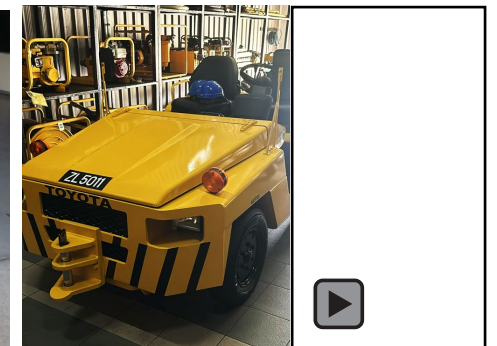
We also offer load testing services for a range of equipment, and occasionally provide design input for custom adapter solutions required to conduct these tests.

- ✓ Aircraft load jacks
- ✓ Engine sling

We offer comprehensive overhaul and refurbishment services for a wide range of equipment, including power systems, hydraulic units, and precision measuring tools, ensuring optimal performance and stability.



We provide hydraulic and pneumatics equipments services, including maintenance, repair and testing, to ensure optimal performance and reliability



# SERVICES HISTORY

› MOTORISED FUEL PUMP

› ELECTRICAL FUEL PUMP

› AIR COMPRESSOR

› PORTABLE HYDRAULIC TEST BENCH

› HYDRAULIC TEST RIG

› CORROSION CONTROL CART

› PORTABLE MAINTENANCE CRANE

› ENGINE DRIVEN PORTABLE SPOTLIGHT

› NITROGEN CHARGING TROLLEY

› HYDRAULIC AIRCRAFT JACK

› AIRCRAFT COOLING SYSTEM

› TOWING BAR

› TAIL BOOM LIFTING SLING ASSY

› MAIN TRANSMISSION LIFTING TOOL ASSY

› MR HEAD LIFTING TOOL ASSY

› GROUND POWER UNIT

› TROLLEY MAIN TRANSMISSION HANDLING

› TRACTOR TROLLEY

› AIRCRAFT TRESTLE

› LIGHT METER LABINO

› TEMPERATURE AND HUMIDITY SENSOR

› MICRO OHMMETER

› AVIONIC TDR

› DIGITAL TACHOMETER

› DIGITAL COMPACT GAUGE

› AMPTEC IGNITERZ

› GROUND STRAP CIRCUIT

› SPRING BALANCE

› TORQUE WRENCH (ALL RANGES)

› VXP BALANCER SYSTEM

› BATTERY CHARGER UNIT CHRISTIE

› AIRCRAFT CHARGER UNIT MEGA

› ANALYZER STATIC PITOT

› VIDEOSCOPE

› NDT EQUIPMENTS

# PRODUCT

One of our standout products is our maintenance platform, which we developed by thoroughly studying customer requirements and aligning with standards such as ISO:EN 12312 PART 8 for maintenance platforms. We conducted detailed analysis and structural tests to ensure its performance and durability.





## ENGINEERING FEATURES

- The decks are surrounded by 4-inch kick panels to give added protection against tools dropping or accidentally kicked from decking workspace. Decks built to accommodate multiple technicians and toolboxes.
- Decks and staircases complete with anti-slip, anti-bounce chequered tread plate that allows for drainage of spilled fluids.
- Design using 3D Software and structure analysed via Finite-Element Analysis method.

### LOAD CAPACITY

This platform can withstand load up to 500 Kg with material fabrication of mild steel/aluminium.

### REMOVABILITY

42-inch removable handrails provide easy access to platform workspace and ease store.

### MOBILITY

Heavy Duty Swivel Caster Wheel equipped with foot actuated locks/brakes that give safety and stability to the platform and the adjustable compensates for uneven flooring. These adjustable wheel jacks provide simple levelling and mobility.

### QUALITY

All features complied with related AGSE EN/ISO, including Platform Ergonomics, EN ISO 11228-2:2007.

### OPTIONAL FEATURES

Retractable air hose and electrical hose provides a maintenance bay to facilitate complete fall protection to technicians servicing all areas of the aircraft. OSHA-compliant high strength, lightweight aluminium work platform with rugged, structural design.

# F/A-18D AIRCRAFT MAINTENANCE PLATFORM



# HEAVY DUTY WORKBENCH

P/N: G7A0001

We designed our Heavy-Duty Workbench to suit the customers' operational requirements. The frames are made from steel and fully welded. The workbench will be installed with swivel caster wheels with brakes. As an option, these benches can be installed with screw jacks. There are various design options and various materials for shelf and top surface to choose from.

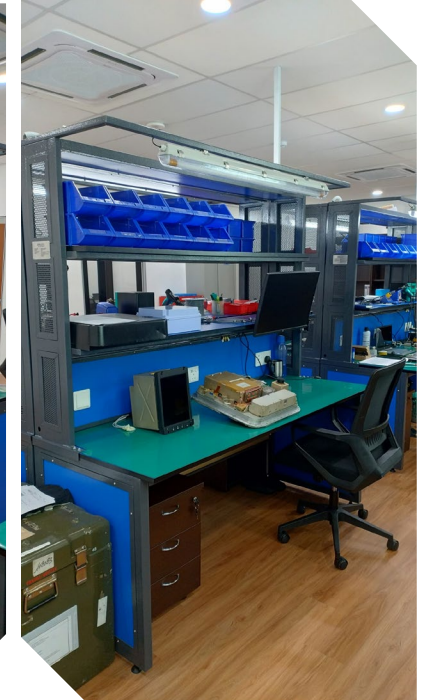
Customers also have the choice for workbench finishing either by powder coat or by enamel paint.



# ESD WORKSTATION

P/N: G7A0002

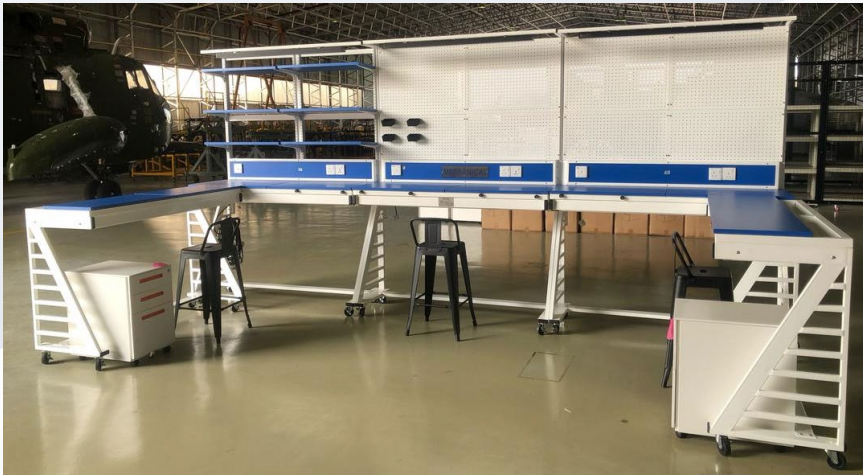
We customised our ESD Workstation to suit the customers' operational & ergonomics requirements. The frames are made from steel and fully welded. There are various design options, accessories and various materials for shelf and top surface to choose from. Customers also have the choice of various finishing colors by powder coat.



# HANGAR WORKSTATION

P/N: G7A0019

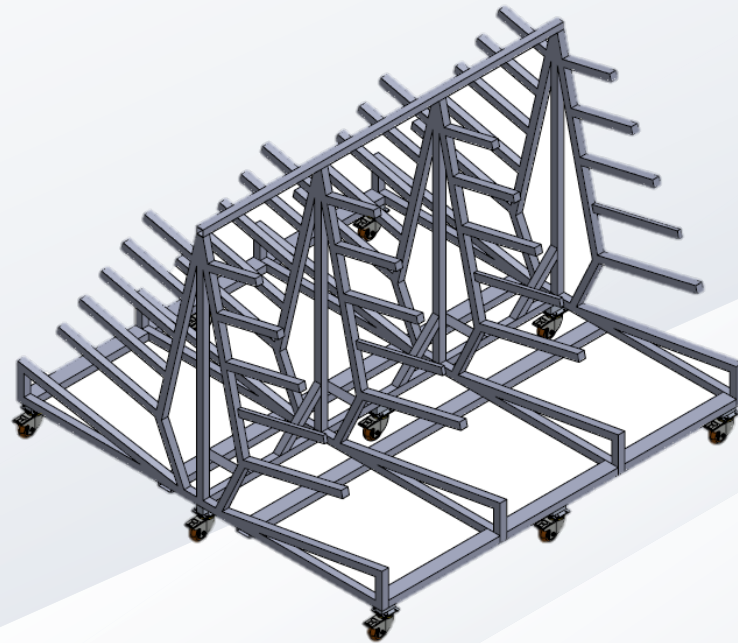
We tailor made our Hangar Workstation to suit the customers' operational & ergonomics requirements. The frames are made from steel and fully welded. There are various design options, accessories and various materials for shelf and top surface to choose from. Customers also have the choice of various finishing colors by powder coat.



# FLIGHT CONTROL KITTY RACK

P/N: G7A0003

The Kitty Rack is derived for mobility and ease of use. This rack can be customized to fit any of the customers' needs for specific height, length, width and a number of arms.



Protection



Mobility



Sturdy



Steerable castor wheel, with brakes and protection padding to store various components, such as primary flight control components and wing leading edge.

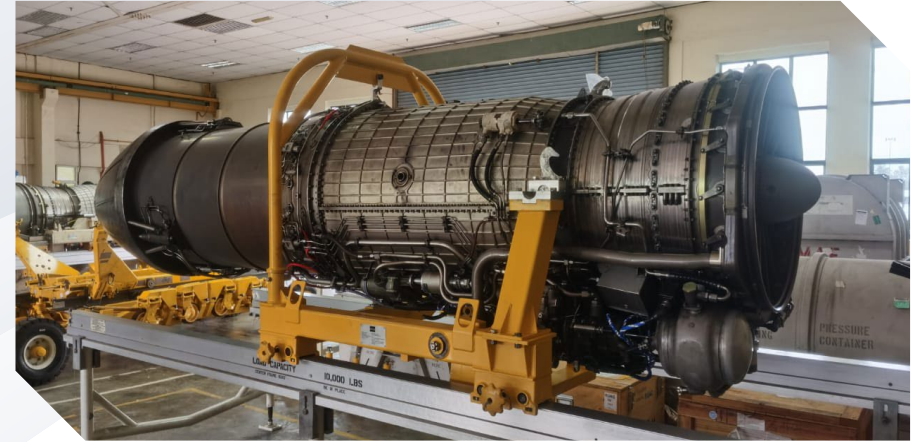
# ENGINE STAND

P/N: G7A0004

The F/A-18D Engine Stand is a specialized equipment designed to support the maintenance and handling of the **engines** used in the F/A-18D aircraft. It is specifically designed to securely hold and position the engines during **maintenance, repair, and transportation**.

The engine stand is constructed with **sturdy materials and features** adjustable components to accommodate different engine sizes and configurations. It provides a **stable platform** for technicians to work on the engines, **ensuring safety and efficiency** during maintenance procedures.

This specialized equipment plays a critical role in the maintenance and servicing of F/A-18D aircraft engines. It allows technicians to **safely access different engine components, perform inspections, conduct repairs, and carry out necessary adjustments**. The engine stand also facilitates the **transportation** of engines within maintenance facilities or between locations.



# TRIPOD TAIL STAND

P/N: G7A0005

Function as to hold the aircraft's tail and can withstand up to 5 tonnes with triangular base stability and durable steel material.



Mobility

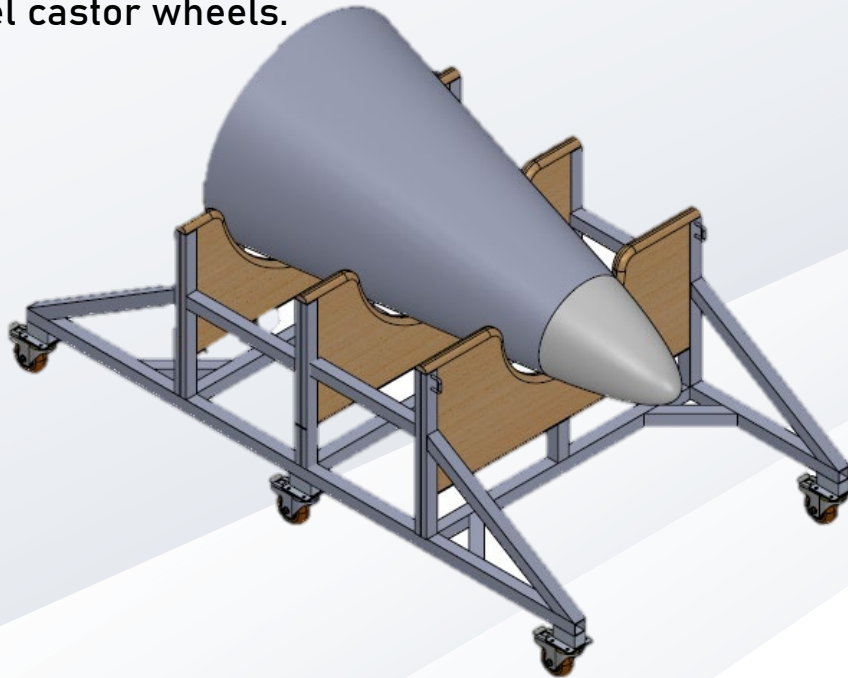


Sturdy

# NOSE RADOME STAND

P/N: G7A0006

Work as a stand to hold as well as to easily transporting the nose radome with a combination of 3mm mild steel, plywood with 2-inch thickness and attached to 4 swivel castor wheels.



Protection



Mobility



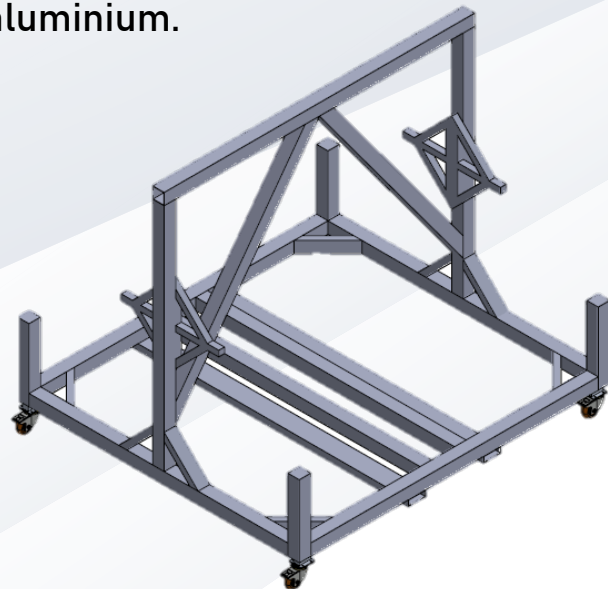
Sturdy

# HORIZONTAL STABILIZER STAND

P/N: G7A0007

Our models of the stand have wheels or casters for easy movement within the maintenance facility. Safety features such as non-slip surfaces or padding are included to protect the stabilizer and ensure technician safety.

The horizontal stabilizer stand is a carefully engineered equipment designed to securely support the horizontal stabilizer of an aircraft during maintenance, repair, or storage. It is made of strong and durable materials like carbon steel or aluminium.



Protection



Mobility

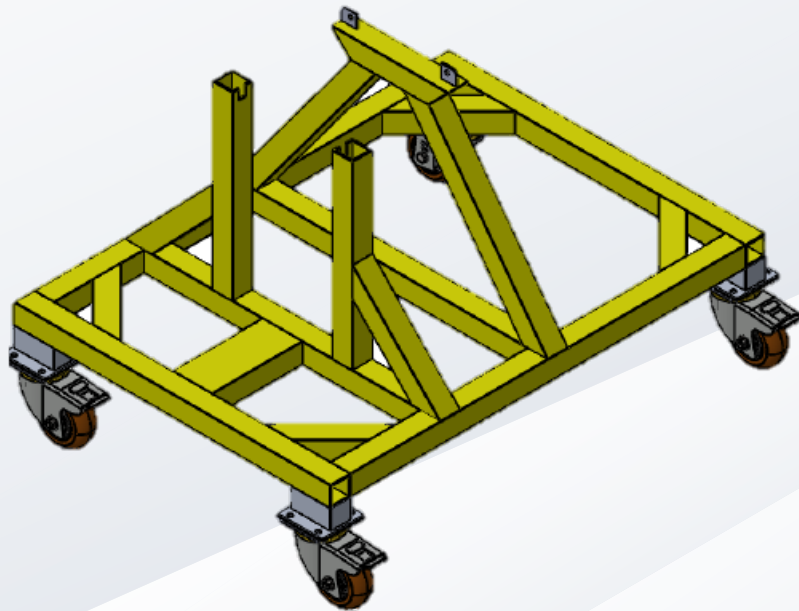


Sturdy

# APU STAND

P/N: G7A0008

The APU stand is constructed from steel frames with 4 caster wheels to ease the movement of the stand and durable structural stability.



Protection



Mobility

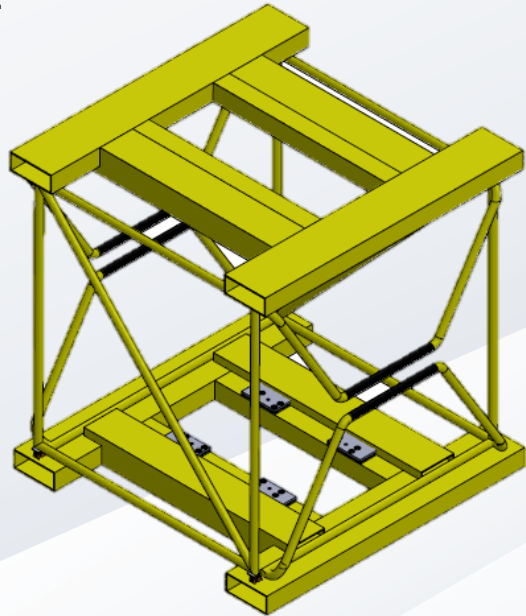


Sturdy

# RADAR STAND

P/N: G7A0009

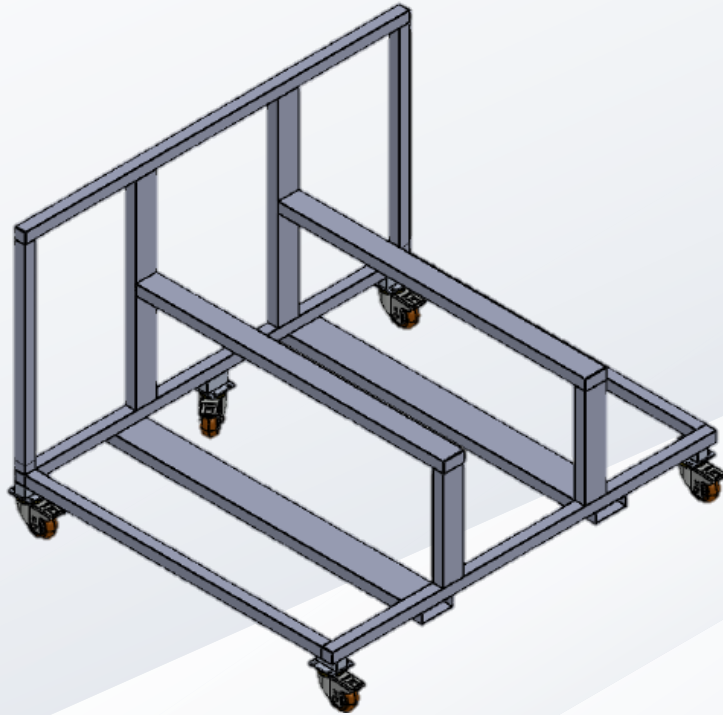
The radar stand is designed to store, secure and protect the aircraft radar and used to transport the radar as it is equipped with a slot for a forklift. It is constructed from steel frames.



Customers also have the choice of finishing either by powder coat or by enamel paint.

# INNER/OUTER WING STAND

P/N: G7A0010



Protection



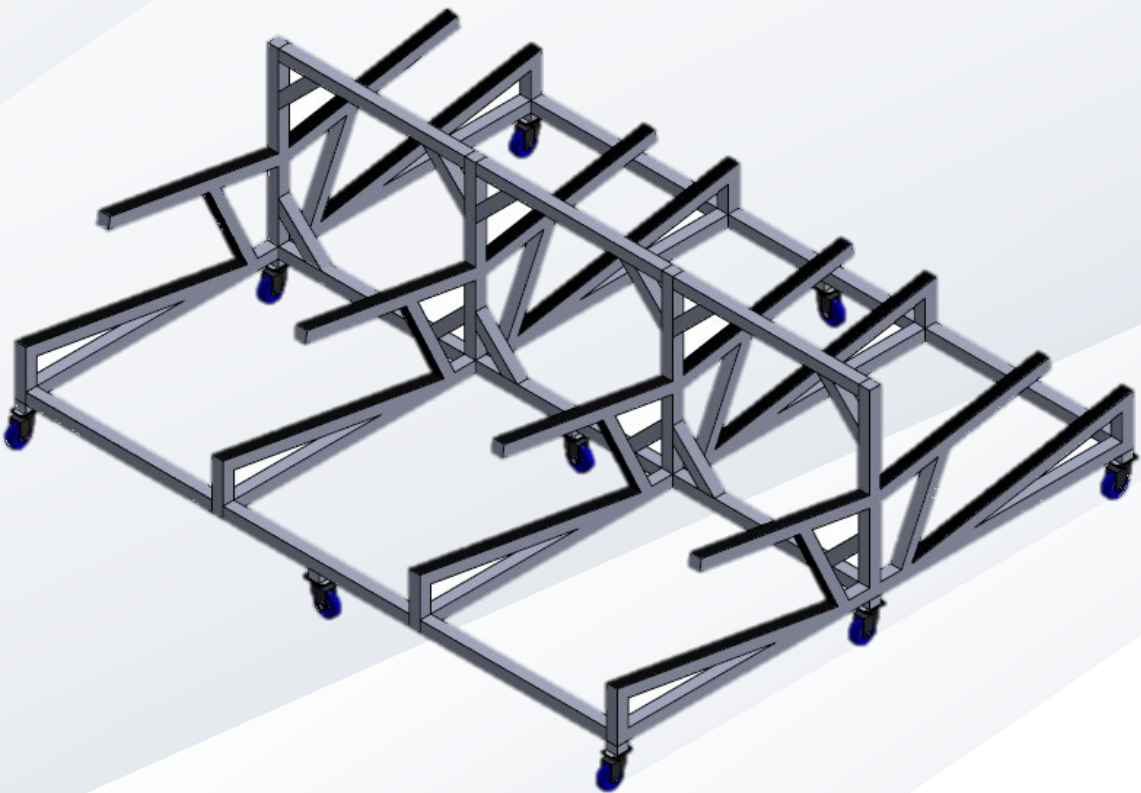
Mobility



Sturdy

# LEADING EDGE STAND

P/N: G7A0011



Protection



Mobility





Sturdy

# ADJUSTABLE WING ADAPTER STAND

P/N: G7A0012

Wing adapter provides support and secure of aircraft wing during its removal and installation. It can hold a load up to 1400 Kg and equipped with motorised screw jack for a vertical mobility control of the wing adapter.

-  Steel frames
-  Heavy duty caster wheels



# DRIP TRAY TROLLEY

P/N: G7A0013

Designed to protect floors from irritating drips of oil, fuel and hydraulic fluids.

- ⚙️ **Material:** Constructed from durable and corrosion-resistant materials, such as stainless steel.
- ⚙️ **Tray:** Raised edges or lips to securely contain spilled liquids.
- ⚙️ **Mobility:** Wheels or casters for easy maneuverability and transportation.
- ⚙️ **Size and Capacity:** Available in various sizes and capacities to accommodate different volumes of spilled liquids.
- ⚙️ **Handle or Push Bar:** Comfortability and ergonomic operation.
- ⚙️ **Stability:** Sturdy and stable frame to prevent tipping or instability during use.
- ⚙️ **Easy Maintenance:** Easy to clean and maintain, allowing for efficient and hassle-free use.



# OIL WASTE TROLLEY (200L)

P/N: G7A0014

The Pneumatic Oil Drainer & Extractor is designed to extract and collect waste oil from the Drip trays and eliminate oil spillage on the floor. It is equipped with wheels and handle bar to ease movement. Powered by DC 12V is a high efficiency diesel pump with small size, big flow, high delivery head and driven for easy operating. It is temperature resistant and anti-shock with a high quality protection rating of IP55. With inner bypass valve and excellent quality, it works by vehicle battery, with good self priming function, pump is also equipped with filter.

## Features

- ✿ With a special handle bar to ease push/pull movement
- ✿ Be equipped with a two-way pump for fluid transfer

## Specifications

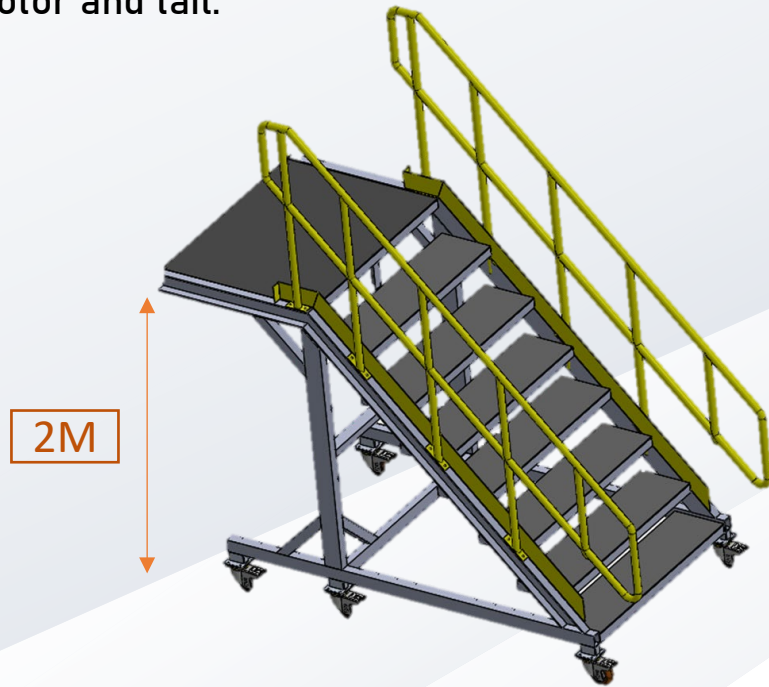
- ✿ Tank/Drum capacity 200Liter
- ✿ Suction Rate Speed 50L/min
- ✿ Suction Hose 2mtr
- ✿ Draining Hose 2mtr
- ✿ Battery 12V
- ✿ Nozzle



# FENNEC HELICOPTER MAINTENANCE STAND

P/N: G7A0015

Technicians can use these stands on routine inspections, maintenance, and repair of components such as helicopter fuselage, engine, rotor and tail.



We will work with the customer to identify the right maintenance stand solution for their particular facility or rotary-wing unit. This approach enables us to determine the best solution while ensuring the quality, safety and reliability of the customer's Helicopter Maintenance Stand.



Hand-rail



Anti-Slip  
Anti-Bounce



Height  
Option



Sturdy



Easy store

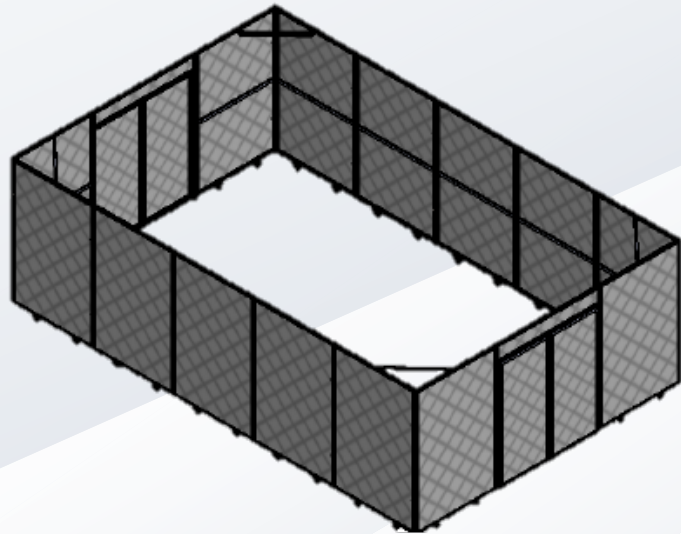


Powder coat  
finish

# MOBILE SPARES CAGE

P/N: G7A0016

It serves as a portable storage solution for spare parts, tools, and equipment in aviation maintenance operations. It enhances efficiency, organization, and accessibility, ensuring that necessary components are readily available for maintenance and repair tasks. The cage is built from 3-types of panels that defined the size of the cage.



Custom color



2 sides door



Mobility



Sturdy



Steel frame

L26ft x W17ft x H8ft

# HELI-SKID TOWING BAR

P/N: G7A0017

Adjustable width of towing bar to move the helicopter with skid secured by enhanced safety belt.

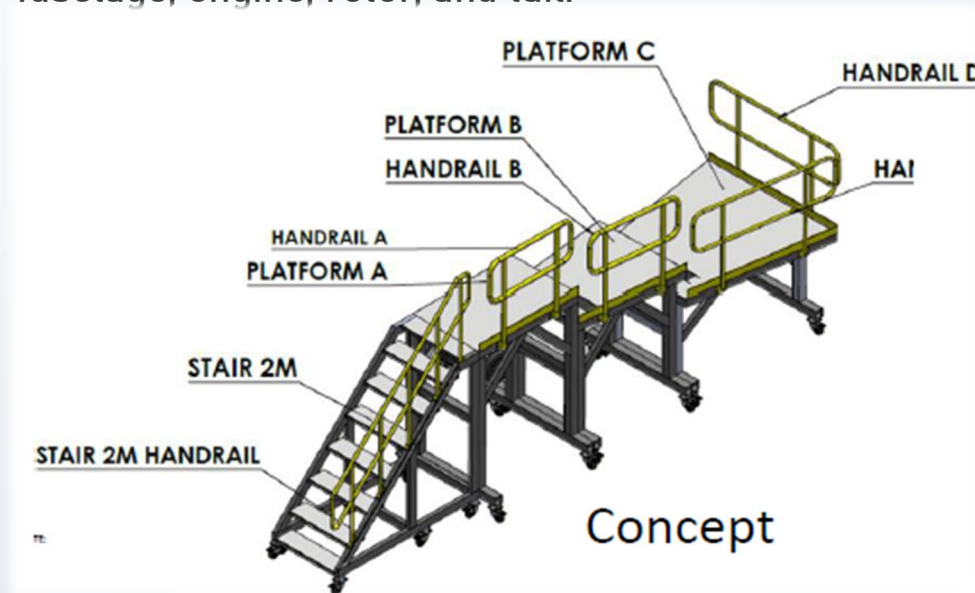
- Steel frames
- Heavy duty wheels
- Bright color to customer requirements
- Designed for MD530G helicopter



# A109 LOH HELICOPTER MAINTENANCE STAND

P/N: G7A0018

Maintenance stands are utilized by technicians for the purpose of conducting routine inspections, performing maintenance tasks, and carrying out repairs on various helicopter components such as the fuselage, engine, rotor, and tail.



Hand-rail



Anti-Slip  
Anti-Bounce



Height  
Option



Sturdy



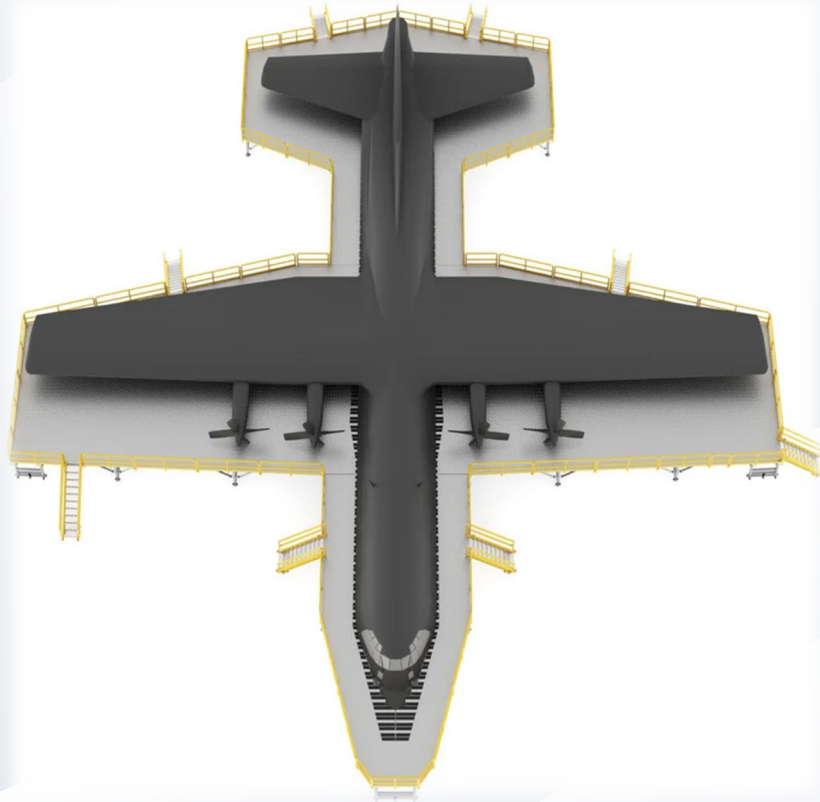
Easy store



Powder coat  
finish



# AVIATION GROUND SUPPORT EQUIPMENT DESIGN DEVELOPMENT OF C130 MAINTENANCE PLATFORM DESIGN CONCEPT



## DEVELOPMENT PROCESS:

- ⚙ BENCHMARKING
- ⚙ CAD DEVELOPMENT USING SOLIDWORKS
- ⚙ TECHNICAL DRAWING DEVELOPMENT



# AVIATION GROUND SUPPORT EQUIPMENT DESIGN DEVELOPMENT OF AW139 HELICOPTER MAINTENANCE PLATFORM DESIGN CONCEPT



## DEVELOPMENT PROCESS:

- BENCHMARKING
- CAD DEVELOPMENT USING SOLIDWORKS
- TECHNICAL DRAWING DEVELOPMENT



# AVIATION GROUND SUPPORT EQUIPMENT DESIGN DEVELOPMENT OF AW139 HELICOPTER MAINTENANCE PLATFORM DESIGN CONCEPT



## DEVELOPMENT PROCESS:

- ⊗ BENCHMARKING
- ⊗ CAD DEVELOPMENT USING SOLIDWORKS
- ⊗ TECHNICAL DRAWING DEVELOPMENT





# AVIATION GROUND SUPPORT EQUIPMENT DESIGN DEVELOPMENT OF MD530G HELICOPTER MAINTENANCE PLATFORM DESIGN CONCEPT





# AVIATION GROUND SUPPORT EQUIPMENT DESIGN DEVELOPMENT OF EC725 HELICOPTER MAINTENANCE PLATFORM DESIGN CONCEPT



## DEVELOPMENT PROCESS:

- BENCHMARKING
- CAD DEVELOPMENT USING SOLIDWORKS
- TECHNICAL DRAWING DEVELOPMENT



# AVIATION GROUND SUPPORT EQUIPMENT DESIGN DEVELOPMENT OF EC725 HELICOPTER MAINTENANCE PLATFORM DESIGN CONCEPT



## DEVELOPMENT PROCESS:

- ⚙ BENCHMARKING
- ⚙ CAD DEVELOPMENT USING SOLIDWORKS
- ⚙ TECHNICAL DRAWING DEVELOPMENT

The logo for G7 AERO SPACE, featuring a stylized 'G' with a red and white arrow pointing upwards and to the right, followed by the words 'AERO' and 'SPACE' stacked vertically in a bold, blue, sans-serif font.

**G7 AERO  
SPACE**

Thank You

The G7 AERO SPACE logo is displayed on a blue fence in the foreground. The fence is made of blue panels and has a metal gate. In the background, there is a modern, multi-story building with a blue and white facade. The building has large windows and a sign that reads 'G7 AERO SPACE'. There are several Malaysian flags flying in front of the building. A street sign above the gate reads 'JALAN PK 88-1'. A street lamp is visible in the foreground. The sky is blue with some clouds. There are some cars parked on the street to the right.

**G7 AERO  
SPACE**